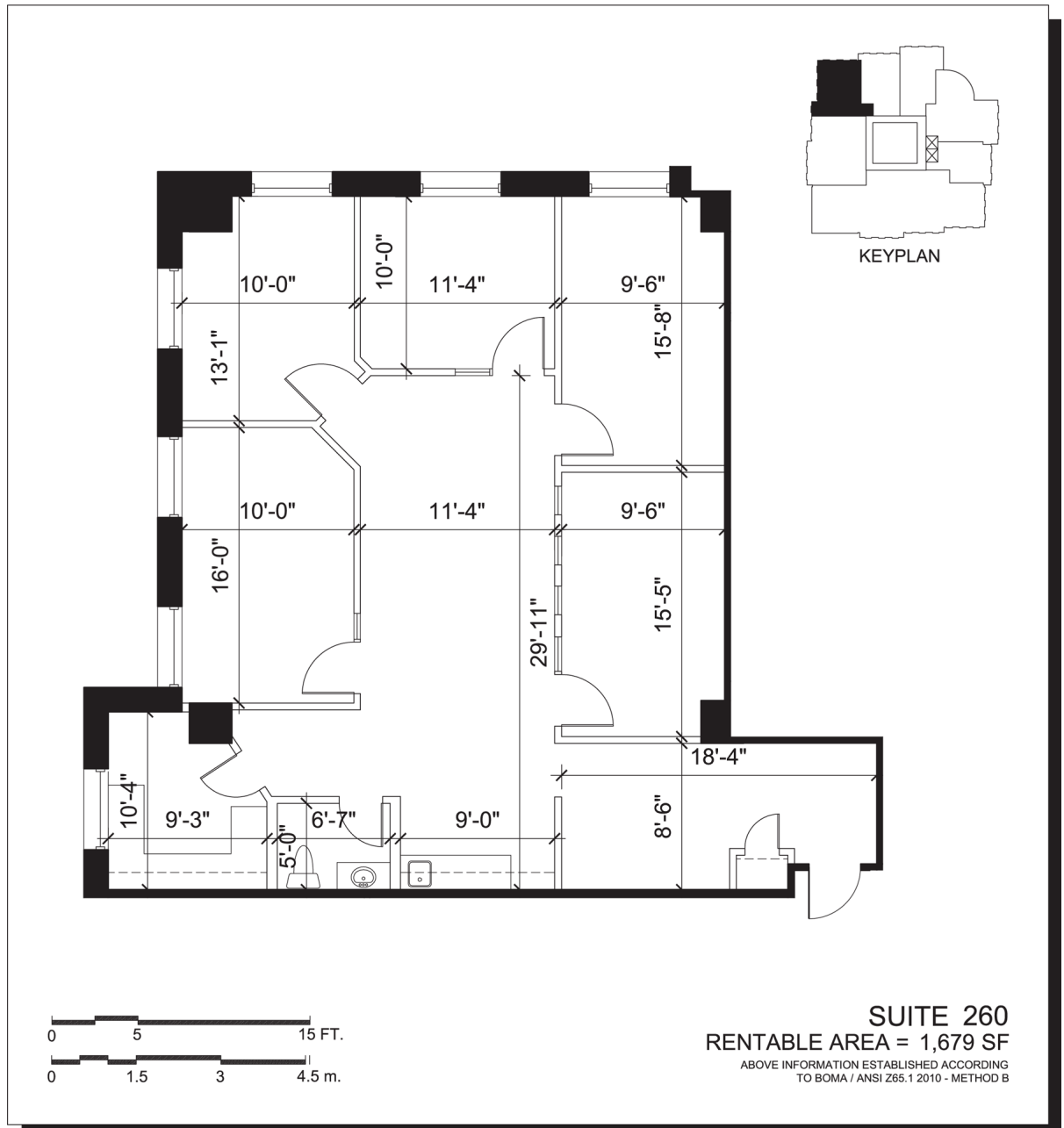


# Office - Floor Plan



LOCATION:

**8500 Leslie Street**  
**Markham**

Leslie Street and Highway 7



FOR MORE INFORMATION, PLEASE CONTACT:

**Gabrielle Mair**  
Vice President Leasing

**905.669.9714**  
[gmair@metrusproperties.com](mailto:gmair@metrusproperties.com)