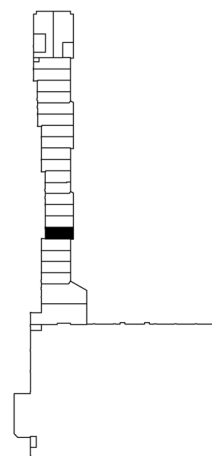
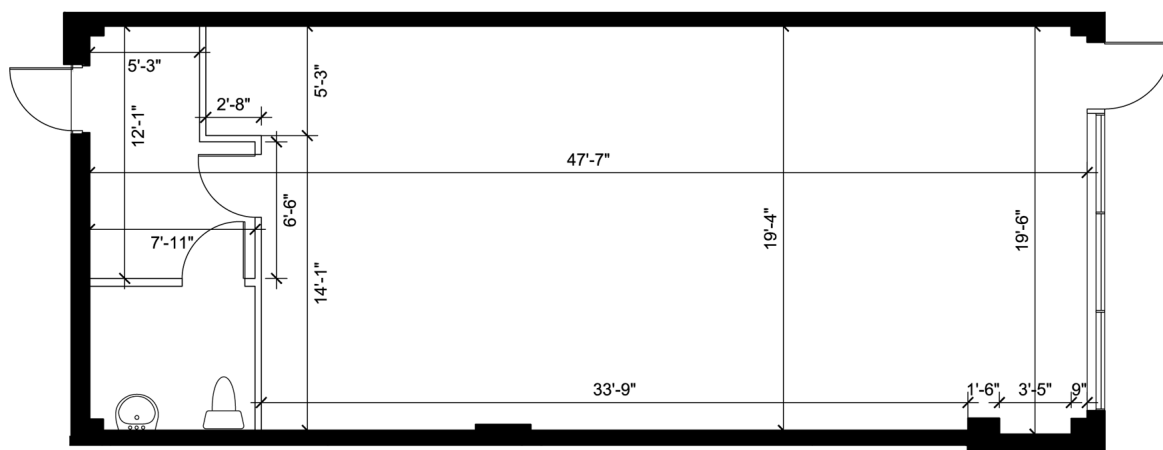


Retail - Floor Plan



KEY PLAN



0 5 15 FT.

UNIT 19
RENTABLE AREA = 1,013 SF

ABOVE INFORMATION ESTABLISHED ACCORDING
TO ANSI/BOMA Z65.2 2009 - METHOD A

LOCATION:

16635 Yonge St.

Town of Newmarket

North-east corner of Yonge St. & Mulock Dr.



FOR MORE INFORMATION, PLEASE CONTACT:

Antoinette Grossi
Vice President Leasing

905.669.9714
agrossi@metrusproperties.com