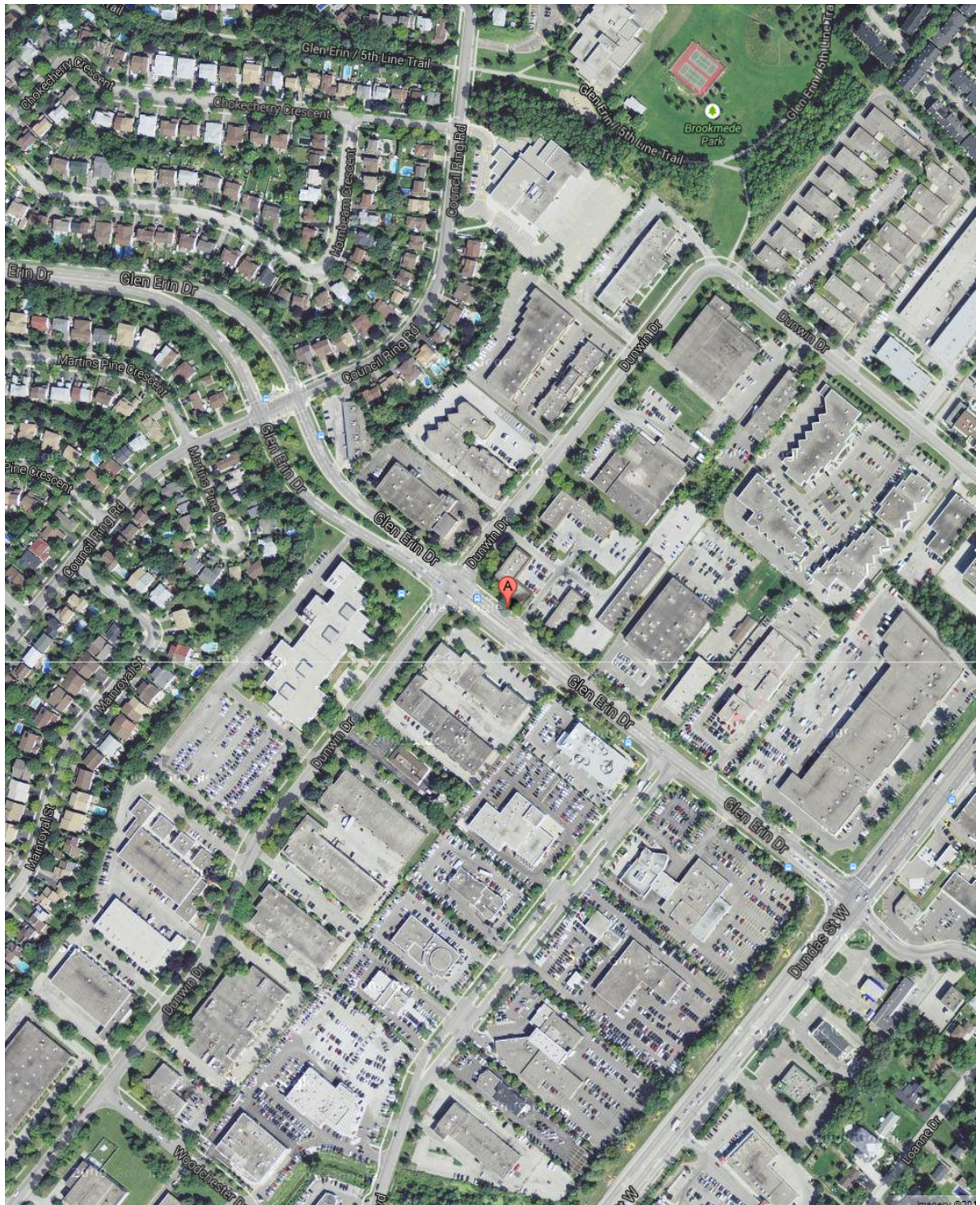


Office - Aerial View



LOCATION:

3105 Glen Erin Dr.
City of Mississauga

South of Erin Mills Pkwy North of Dundas St. West



FOR MORE INFORMATION, PLEASE CONTACT:

Gabrielle Mair
Vice President Leasing

905.669.9714
gmail@metrusproperties.com

The information combined herein has been obtained from source deemed reliable; however, we do not warrant its accuracy. The information herein may change from time to time without notice. The property may be withdrawn from the market without notice.