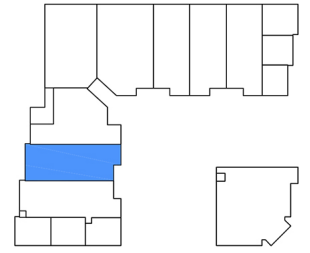
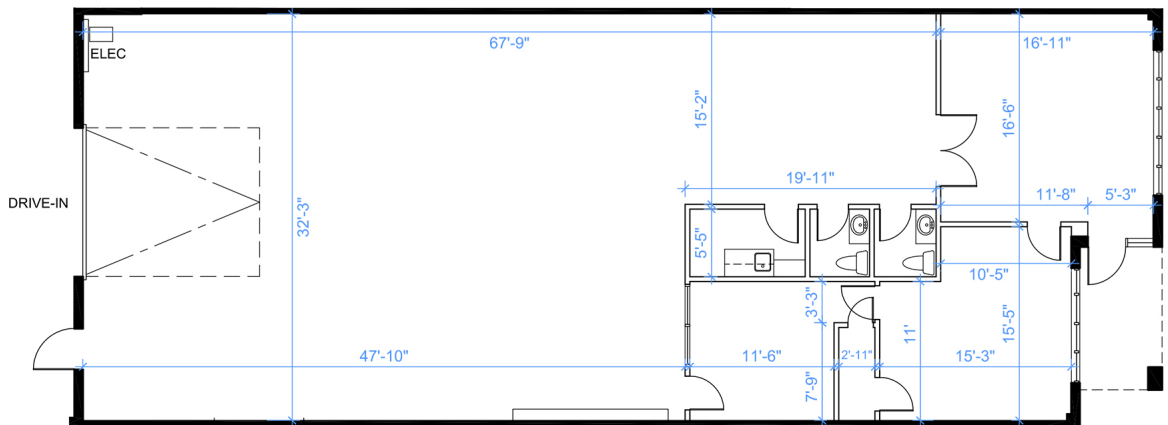


# Industrial - Floor Plan



KEY PLAN



**UNIT A5**  
**RENTABLE AREA = 2,784 SF**  
ABOVE INFORMATION ESTABLISHED ACCORDING TO  
THE BOMA / SIOR INDUSTRIAL STANDARD  
ANSI / Z65.2 2012 - METHOD A

LOCATION:

**10 West Pearce Street**  
**Town of Richmond Hill**

Corner of Leslie Street and West Pearce Street



FOR MORE INFORMATION, PLEASE CONTACT:

**Gabrielle Mair**  
Vice President Leasing

**905.669.9714**  
[gmair@metrusproperties.com](mailto:gmair@metrusproperties.com)