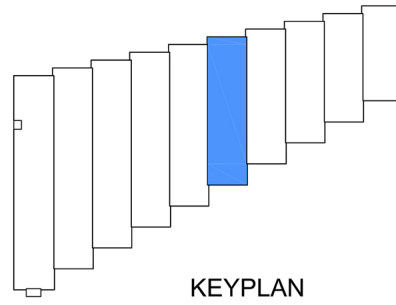
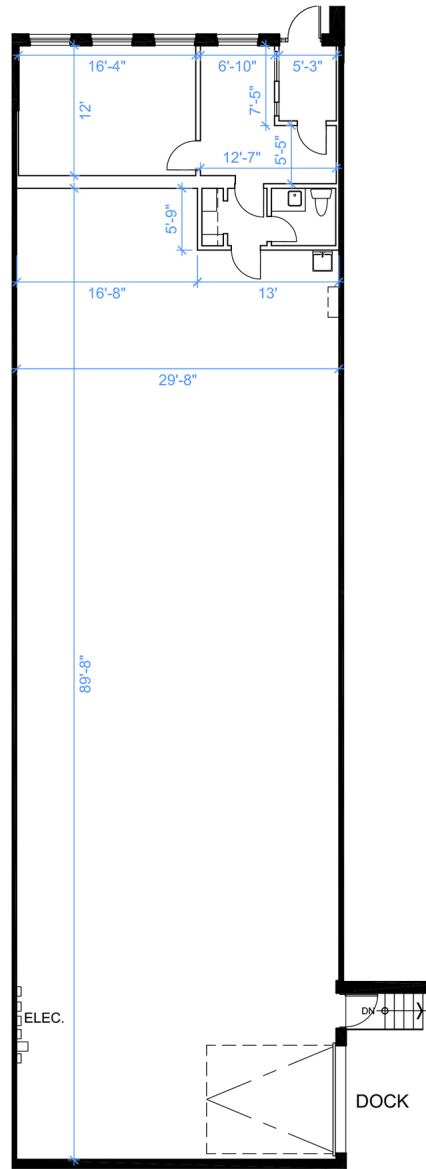


# Industrial - Floor Plan



KEYPLAN

**UNIT 4**  
**RENTABLE AREA = 3,217 SF**  
ABOVE INFORMATION ESTABLISHED ACCORDING TO  
THE BOMA INDUSTRIAL STANDARD  
ANSI/BOMA Z65.2 2012 - METHOD A

WAREHOUSE CLEAR HEIGHT = 14'-2"



LOCATION:

**355 Rayette Rd.**  
**City of Vaughan**

Between Keele St. and Dufferin St. South of Langstaff

FOR MORE INFORMATION, PLEASE CONTACT:

**Gabrielle Mair**  
Vice President Leasing

**905.669.9714**  
[gmair@metrusproperties.com](mailto:gmair@metrusproperties.com)

