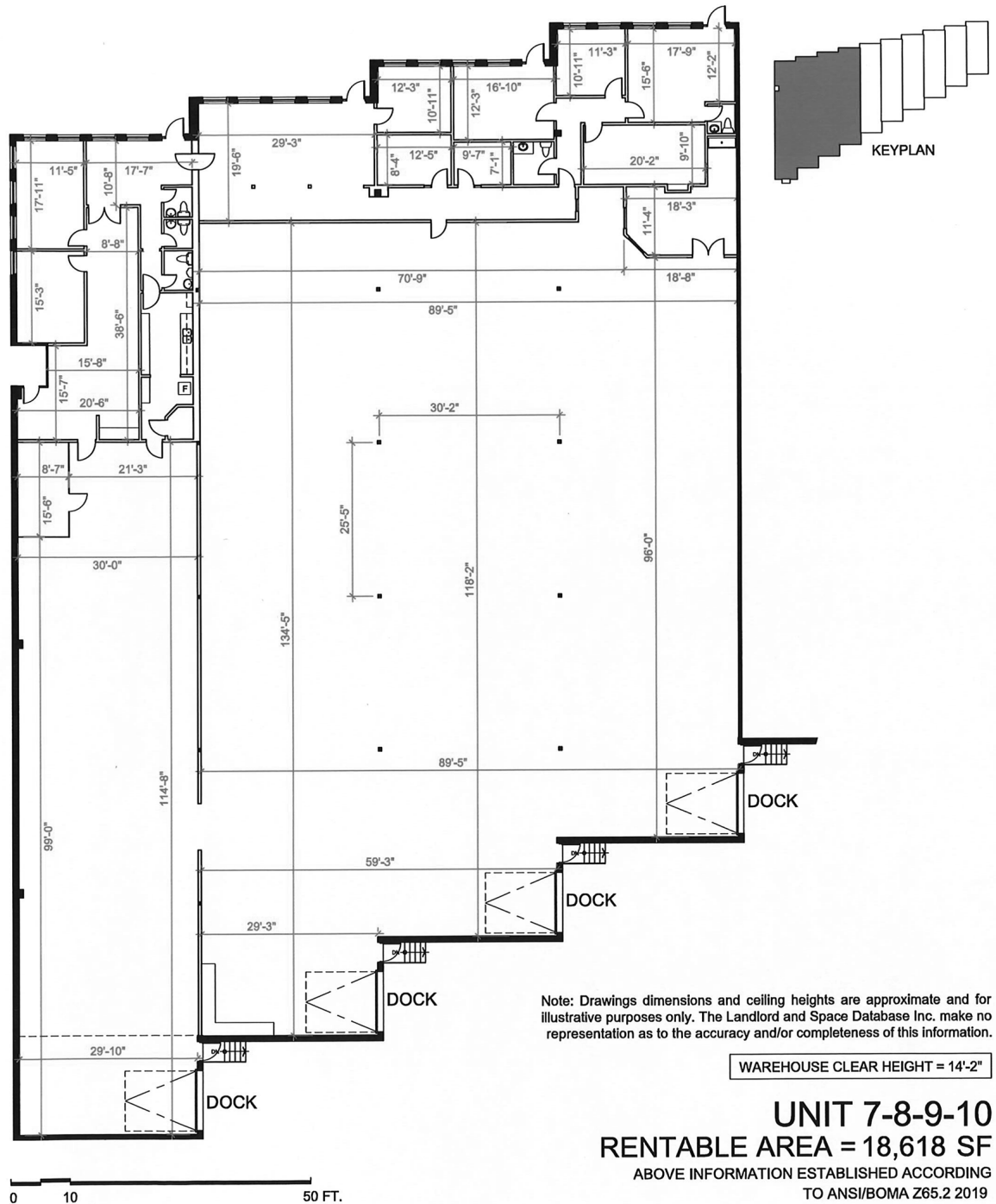


# Industrial - Floor Plan



LOCATION:

**355 Rayette Rd.**

**City of Vaughan**

Between Keele St. and Dufferin St. South of Langstaff

FOR MORE INFORMATION, PLEASE CONTACT:

**Gabrielle Mair**

Vice President Leasing

**905.669.9714**

[gmair@metrusproperties.com](mailto:gmair@metrusproperties.com)

