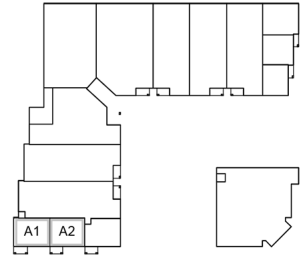
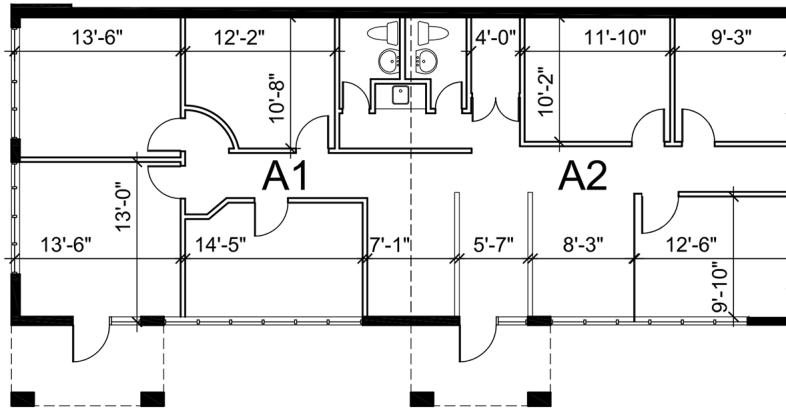


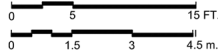
Office - Floor Plan



KEY PLAN



UNITS A1 - A2
RENTABLE AREA = 1,648 SF



ABOVE INFORMATION ESTABLISHED ACCORDING TO THE BOMA / SIOR INDUSTRIAL STANDARD

LOCATION:

10 West Pearce St.
Town of Richmond Hill
Corner of Leslie Street and West Pearce Street



FOR MORE INFORMATION, PLEASE CONTACT:

Gabrielle Mair
Vice President Leasing

905.669.9714
gmair@metrusproperties.com