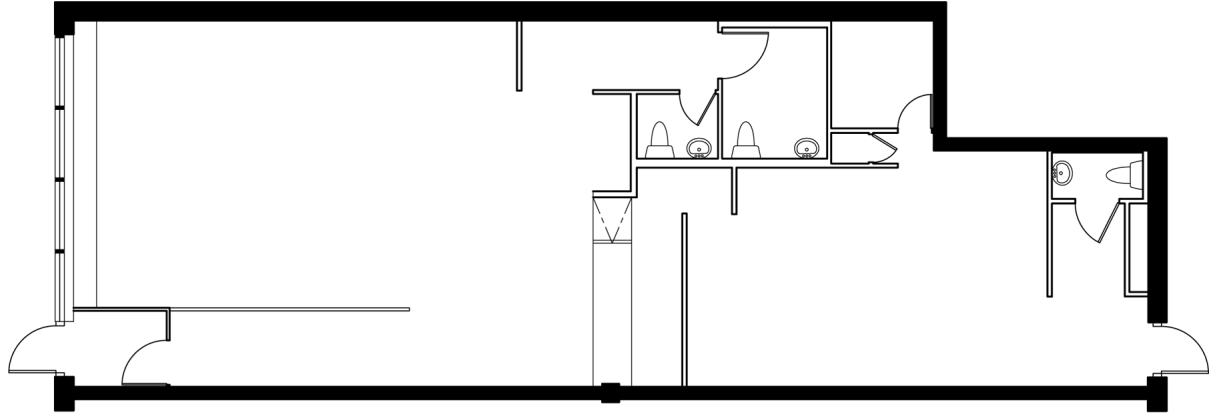


# Retail - Floor Plan



UNIT 1  
RENTABLE AREA = 1,800 SF  
DRAWING & RENTABLE AREA PROVIDED BY METRUS

LOCATION:

**18185 Yonge Street**  
**Town of East Gwillimbury**

South-east corner of Yonge St. & Green Lane



FOR MORE INFORMATION, PLEASE CONTACT:

**Antoinette Grossi**  
Vice President Leasing

**905.669.9714**  
[agrossi@metrusproperties.com](mailto:agrossi@metrusproperties.com)