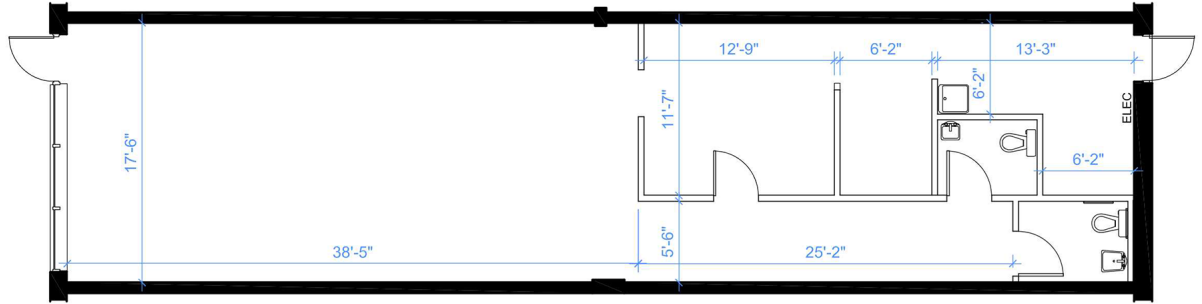


Retail - Floor Plan



0 5 15 FT.

UNIT 2
RENTABLE AREA = 1,345 SF
RENTABLE AREA PROVIDED BY METRUS

LOCATION:

18185 Yonge Street
Town of East Gwillimbury

South-east corner of Yonge St. & Green Lane



FOR MORE INFORMATION, PLEASE CONTACT:

Antoinette Grossi
Director of Leasing

905.669.9714
agrossi@metrusproperties.com