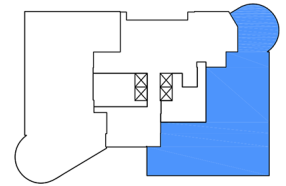
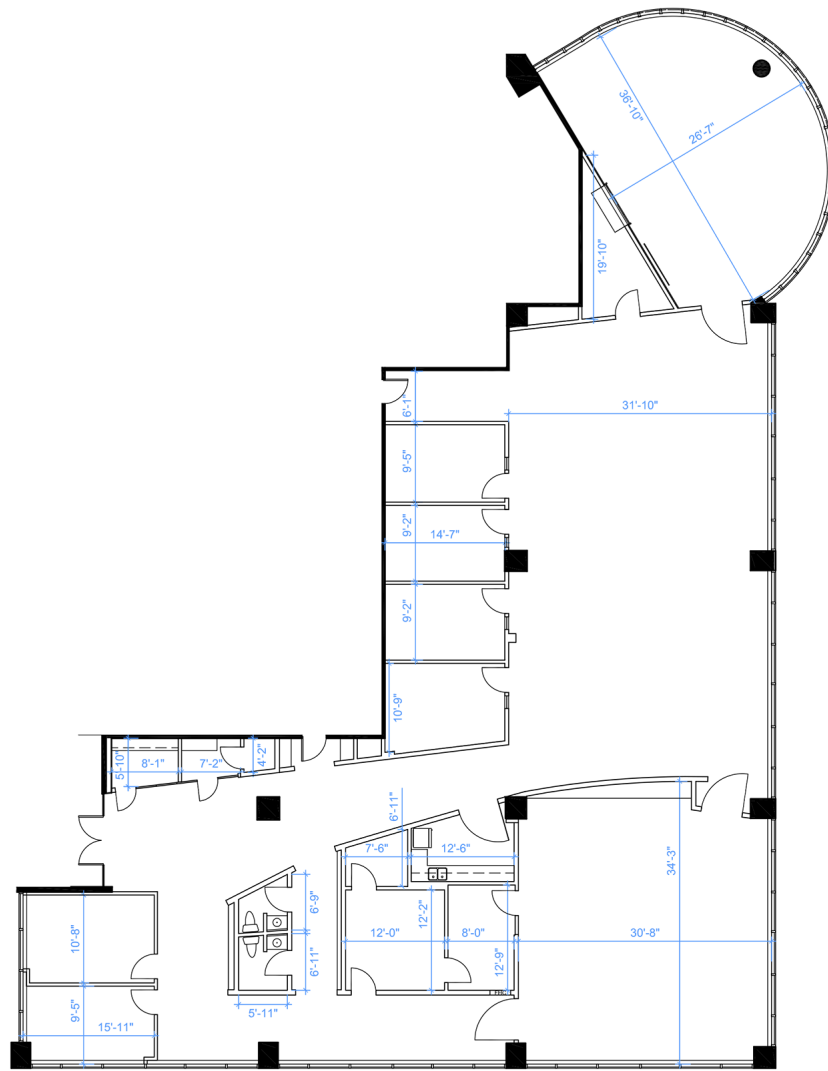


# Office - Floor Plan



KEYPLAN

**SUITE 100**  
**RENTABLE AREA = 7,829 SF**  
ABOVE INFORMATION ESTABLISHED ACCORDING  
TO BOMA / ANSI Z65.1 2010 - METHOD B

LOCATION:

**45 Vogell Road**  
**Town of Richmond Hill**  
16th Avenue & Highway 404



FOR MORE INFORMATION, PLEASE CONTACT:

**Gabrielle Mair**  
Vice President Leasing

**905.669.9714**  
[gmair@metrusproperties.com](mailto:gmair@metrusproperties.com)

The information combined herein has been obtained from source deemed reliable; however, we do not warrant it's accuracy. The information herein may change from time to time without notice. The property may be withdrawn from the market without notice.