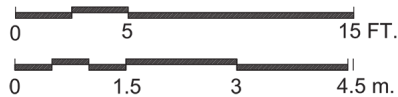
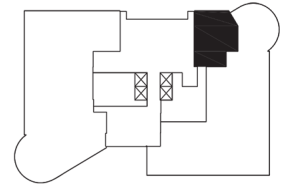
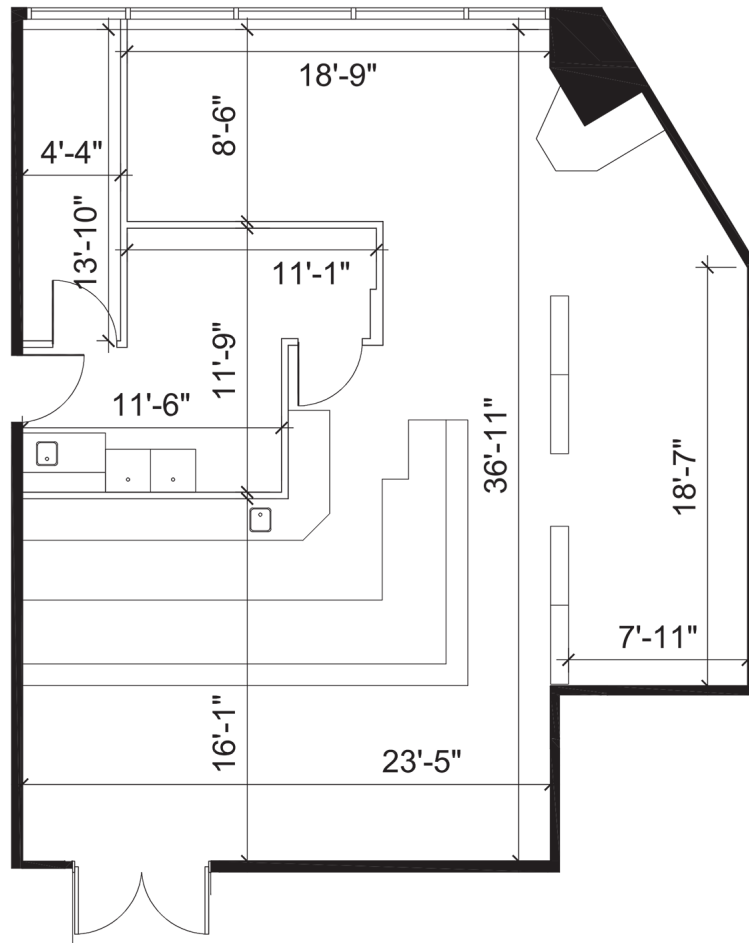


Office - Floor Plan



SUITE 103
RENTABLE AREA = 1,296 SF
ABOVE INFORMATION ESTABLISHED ACCORDING
TO BOMA / ANSI Z65.1 2010 - METHOD B

LOCATION:

45 Vogell Road
Town of Richmond Hill
16th Avenue & Highway 404



FOR MORE INFORMATION, PLEASE CONTACT:

Gabrielle Mair
Vice President Leasing

905.669.9714
gmair@metrusproperties.com