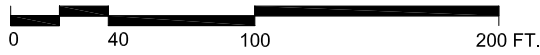


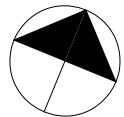
- OCCUPANT OFFICE AREA
- OCCUPANT WAREHOUSE AREA
- VERTICAL PENETRATIONS
- FLOOR SERVICE AREA
- BUILDING SERVICE AREA
- DEMISING WALL



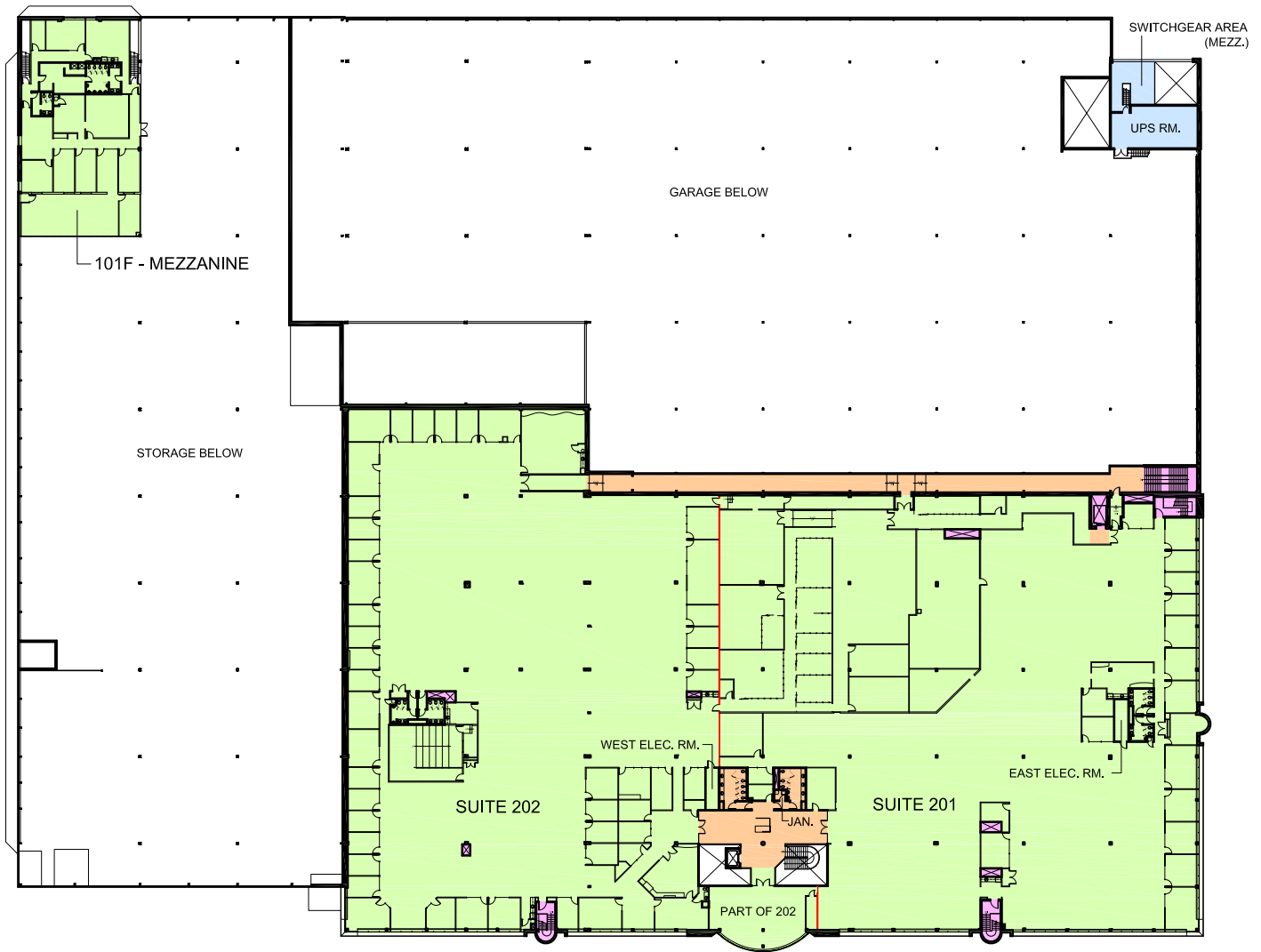
AREA SUMMARY

UNIT No.	OCCUPANT AREA	RENTABLE AREA
101A	63,209 S.F.	64,819 S.F.
101B	1,937 S.F.	1,986 S.F.
101C	54,562 S.F.	55,952 S.F.
101D	81,947 S.F.	84,035 S.F.
101E	10,250 S.F.	10,512 S.F.
102	6,116 S.F.	6,272 S.F.
TOTAL	218,022 S.F.	223,576 S.F.

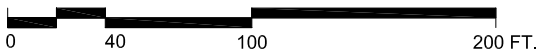
LOAD FACTOR A = 1.0255
 ABOVE INFORMATION ESTABLISHED ACCORDING TO
 THE BOMA/SIOR INDUSTRIAL STANDARD
 ANSI / BOMA Z65.2 2012 - METHOD A



6 Monogram Place
Toronto, ON
Ground Floor - Area Summary



- OCCUPANT OFFICE AREA (RAISED FLOOR)
- VERTICAL PENETRATIONS
- FLOOR SERVICE AREA
- DEMISING WALL



AREA SUMMARY

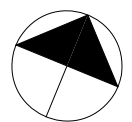
UNIT No.	OCCUPANT AREA	RENTABLE AREA
101F-MEZZ	5,415 S.F.	5,534 S.F.

LOAD FACTOR = 1.0221

201	40,433 S.F.	43,647 S.F.
202	40,457 S.F.	43,674 S.F.
TOTAL (2nd)	80,890 S.F.	87,321 S.F.

LOAD FACTOR = 1.0795

ABOVE INFORMATION ESTABLISHED ACCORDING TO
THE BOMA/SIOR INDUSTRIAL STANDARD
ANSI / BOMA Z65.2 2012 - METHOD A



6 Monogram Place
Toronto, ON
Second Floor & Mezzanines - Area Summary