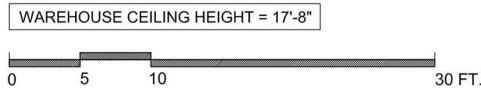
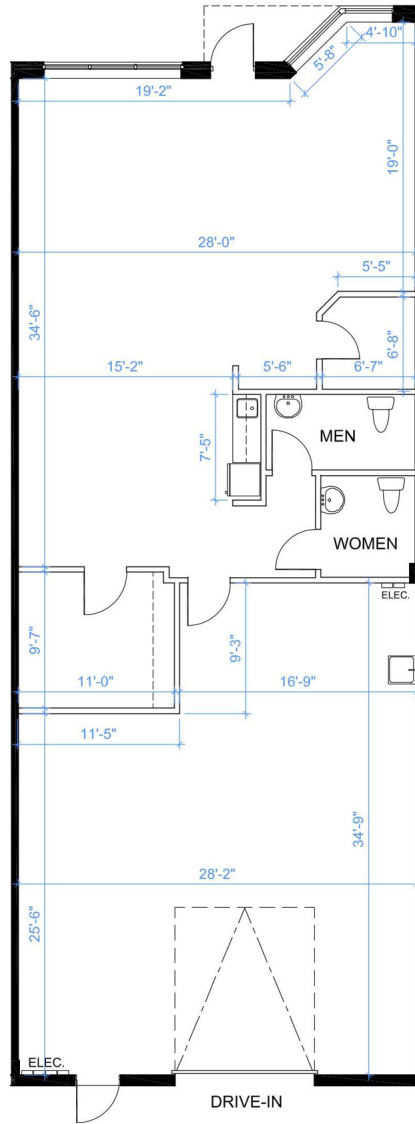


# Retail - Floor Plan



**UNIT 9**  
RENTABLE AREA = 2,102 SF  
RENTABLE AREA PROVIDED BY METRUS



3145 Dundas St W  
Mississauga, ON  
Unit 9- Area Summary

LOCATION:

**3145 Dundas St. W.**  
**City of Mississauga**

North-east corner of Dundas St. & Ridgeway Rd.



FOR MORE INFORMATION, PLEASE CONTACT:

**Antoinette Grossi**  
Vice President Leasing

**905.669.9714**  
[agrossi@metrusproperties.com](mailto:agrossi@metrusproperties.com)