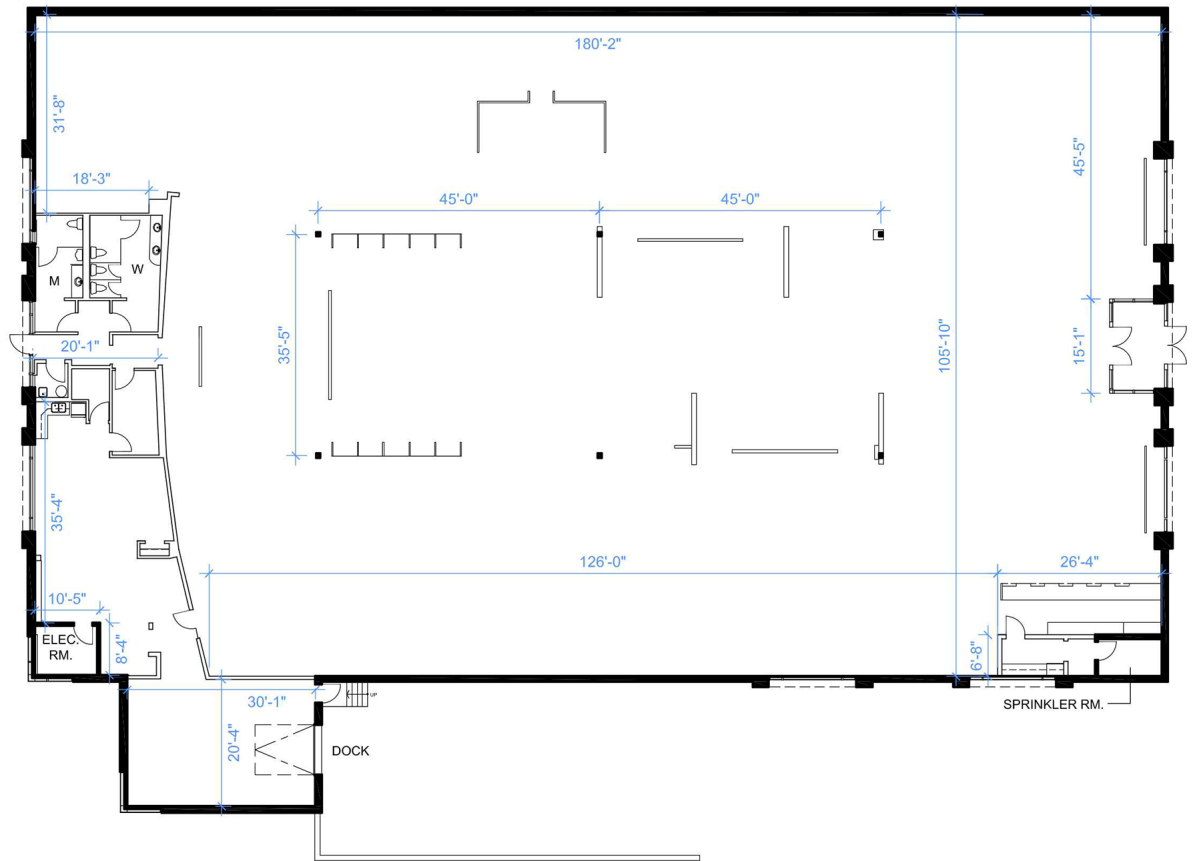


Retail - Floor Plan



0 10 50 FT.

GROSS LEASABLE AREA = 20,276 SF

AREA INFORMATION ESTABLISHED ACCORDING TO ANSI/BOMA Z65.5 2010,
RETAIL BUILDINGS: STANDARD METHODS OF MEASUREMENT

LOCATION:

8705 Yonge St.
Town of Richmond Hill

North-east corner of Yonge St. & Hwy. 7.



FOR MORE INFORMATION, PLEASE CONTACT:

Antoinette Grossi
Director of Leasing

905.669.9714
agrossi@metrusproperties.com