

# CITY PROFILE

## BRAMPTON

### Regional Municipality of Peel

- Brampton has a current population exceeding 260,000 people, ranking it among Canada's largest cities.
- Brampton has the land availability and servicing capacity to double its population over the next 25 years.
- Brampton is a \$1.2 billion consumer market with retail expenditures per capita exceeding \$6900/annum (1991).
- Brampton has a large and diverse economy, its 7000 businesses employ over 92,000 people.
- It is efficiently served by Highways. 410, 7, 50, 10 and 407.
- Minutes away from Pearson International Airport.



Contact: Metrus Properties  
Tel: (905) 669-9714 Tor: (416) 798-7173 Fax: (905) 326-4182

# PROJECT PROFILE

## GOREWAY BUSINESS PARK

City of Brampton, Regional Municipality of Peel

### Location:

Northeast corner of Burbank Court  
and Goreway Drive

### Zoning:

Prestige Industrial  
M4 - No Open Storage

### Legal Description:

Part of lot 5  
Concession 8

### Site Attractions:

- Highway. 7 and Highway. 407 exposure
- Home of Price Costco
- Across from new Canadian Tire Super Warehouse
- Close to C.N. International Terminal
- Ideal for build-to-suit

### Plan Number:

Part 1  
Ref. Plan #43R-30374

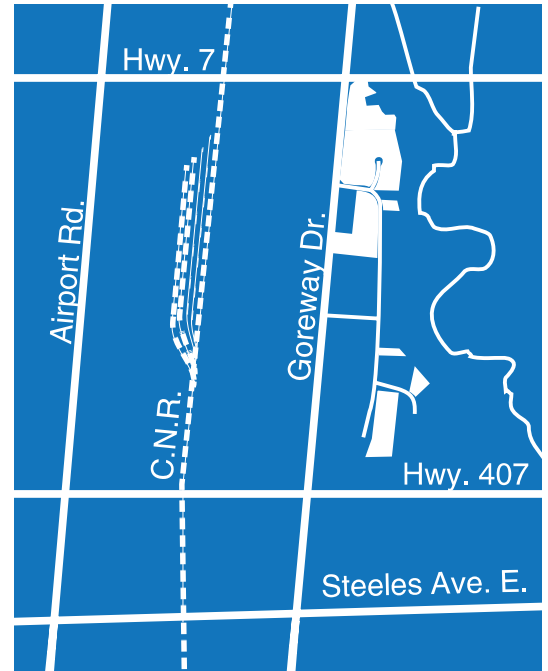
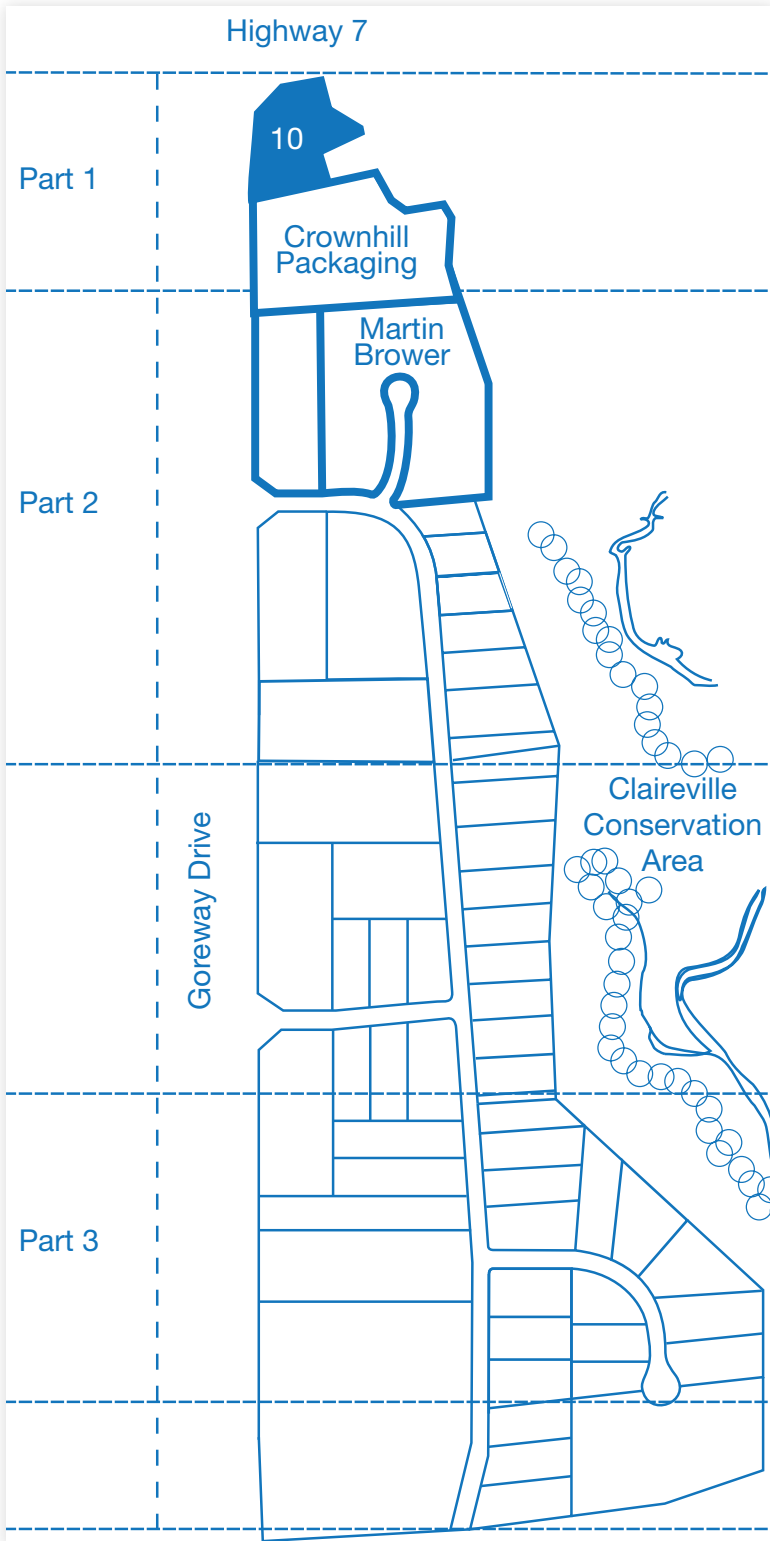
### Acreage:

3.345 Acres



Contact: Metrus Properties  
Tel: (905) 669-9714 Tor: (416) 798-7173 Fax: (905) 326-4182

# GOREWAY BUSINESS PARK



## GOREWAY BUSINESS PARK:

	Lot	Acreage	Zoning
<b>Part 1</b>	10	3.345	M-4