

CITY PROFILE

BRAMPTON

Regional Municipality of Peel

- Brampton has a current population exceeding 260,000 people, ranking it among Canada's largest cities.
- Brampton has the land availability and servicing capacity to double its population over the next 25 years.
- Brampton is a \$1.2 billion consumer market with retail expenditures per capita exceeding \$6900/annum (1991).
- Brampton has a large and diverse economy, its 7000 businesses employ over 92,000 people.
- It is efficiently served by Highways. 410, 7, 50, 10 and 407.
- Minutes away from Pearson International Airport.



Contact: Metrus Properties
Tel: (905) 669-9714 Tor: (416) 798-7173 Fax: (905) 326-4182

PROJECT PROFILE

GOREWAY BUSINESS PARK

City of Brampton, Regional Municipality of Peel

Location:

Northeast corner of Burbank Court
and Goreway Drive

Zoning:

Prestige Industrial
M4 - No Open Storage

Legal Description:

Part of lot 5
Concession 8

Site Attractions:

- Highway. 7 and Highway. 407 exposure
- Home of Price Costco
- Across from new Canadian Tire Super Warehouse
- Close to C.N. International Terminal
- Ideal for build-to-suit

Plan Number:

Part 1
Ref. Plan #43R-30374

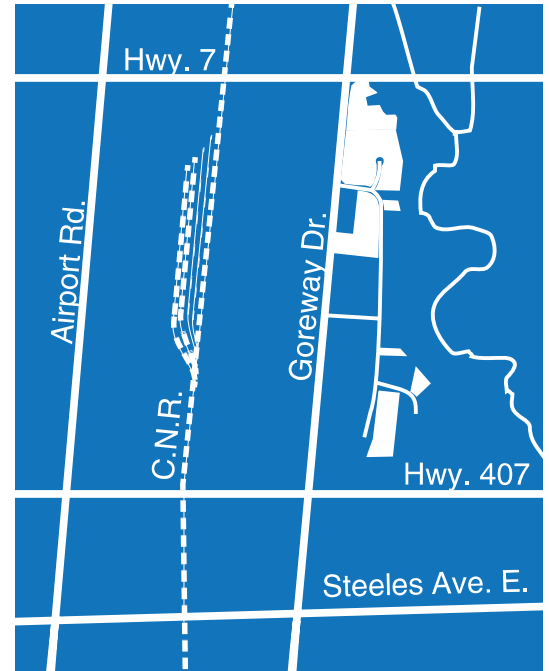
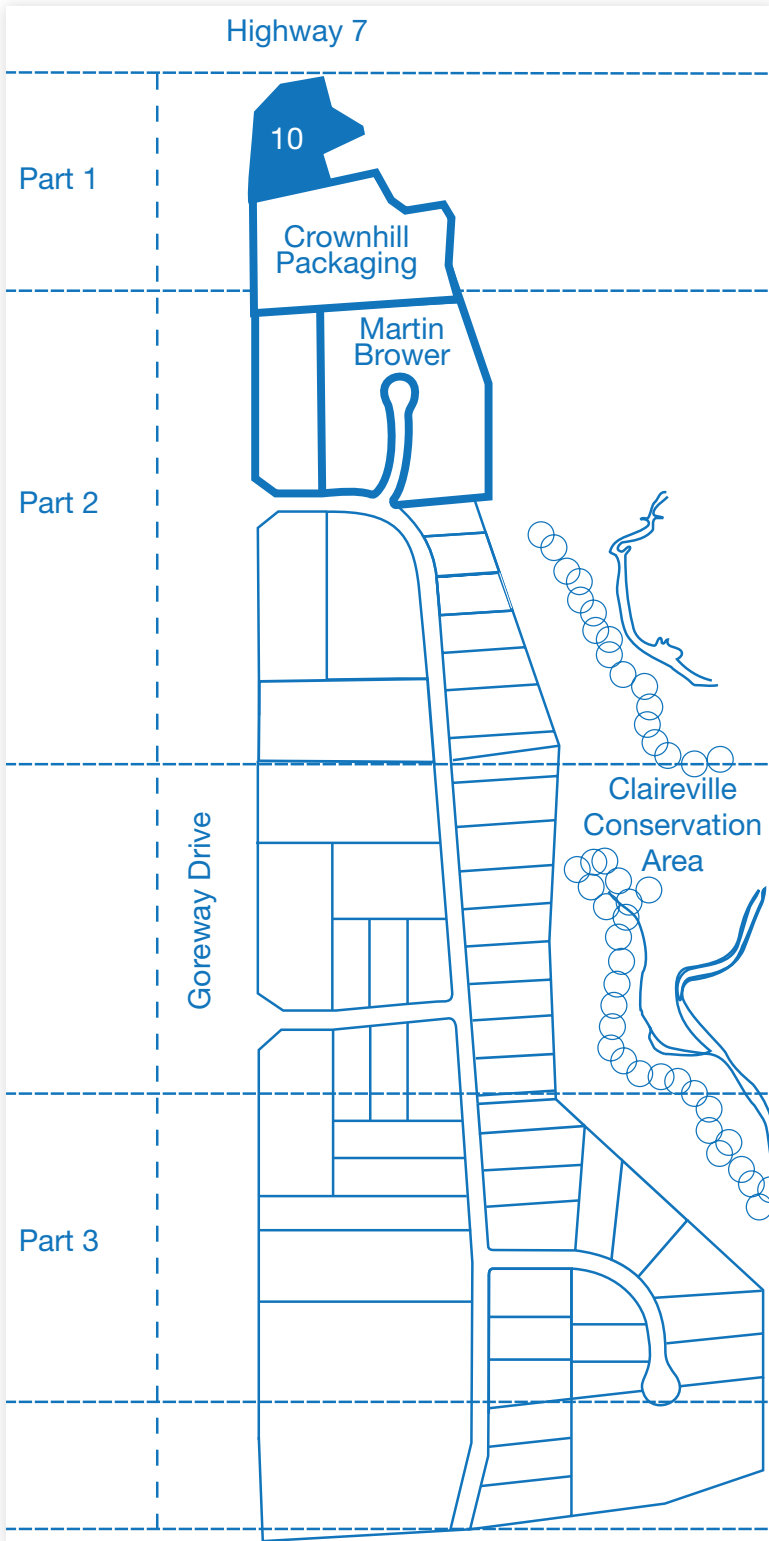
Acreage:

3.345 Acres



Contact: Metrus Properties
Tel: (905) 669-9714 Tor: (416) 798-7173 Fax: (905) 326-4182

GOREWAY BUSINESS PARK



GOREWAY BUSINESS PARK:

	Lot	Acreage	Zoning
Part 1	10	3.345	M-4

PROJECT PROFILE

GOREWAY MEADOWS CENTRE

City of Brampton, Regional Municipality of Peel

Location:

Southeast corner of Castlefield Drive and Steeles Avenue East

Legal Description:

Part of Block 3
Concession 8

Plan Number:

43M-811

Acreage:

Lot 1 - 6.66 Acres

Zoning:

M-1 - Industrial

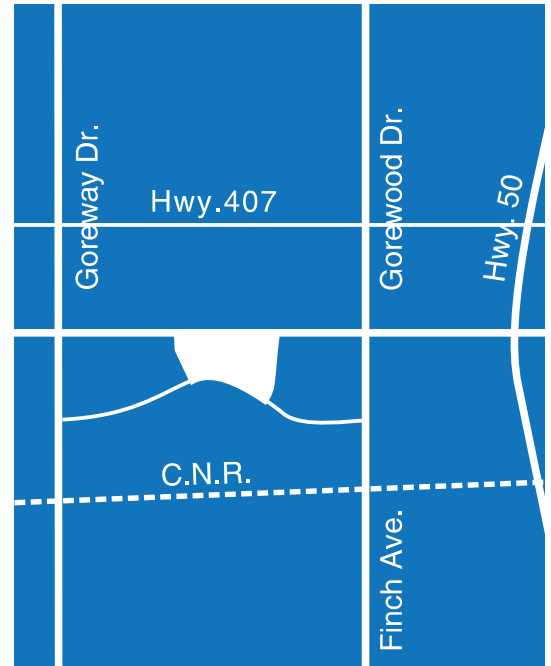
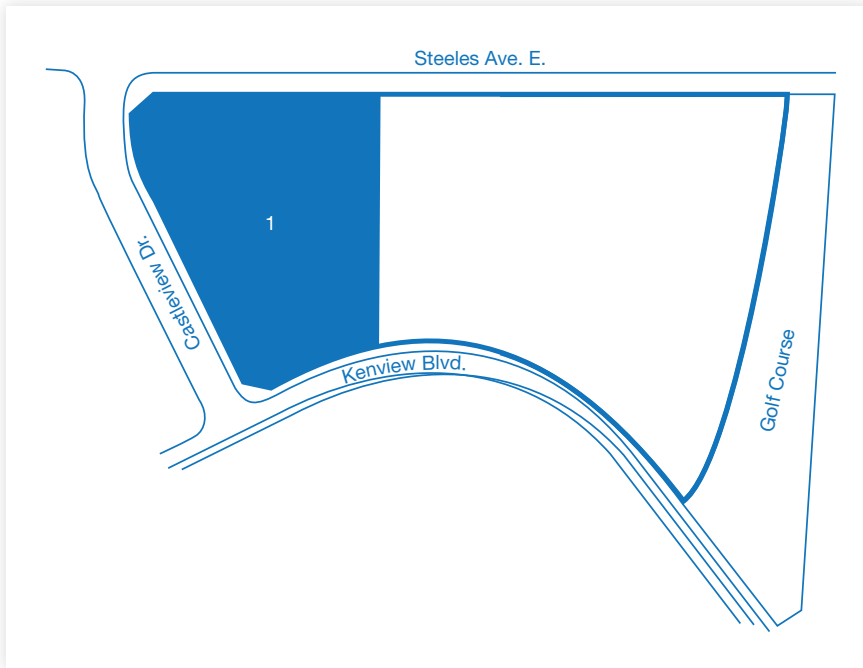
Site Attractions:

- Close to Highway 427 access point
- Close to Highway 407 ramp
- Excellent exposure to Steeles Avenue Rd. (6 lane Arterial Road.)
- 5 minutes from Pearson International Airport.



Contact: Metrus Properties
Tel: (905) 669-9714 Tor: (416) 798-7173 Fax: (905) 326-4182

GOREWAY MEADOWS CENTRE



GOREWAY MEADOWS CENTRE:

Lot	Acreage	Zoning
1	6.66	M-1