

CITY PROFILE

TOWN OF HALTON HILLS Regional Municipality of Halton

- Located in the Halton Hills 401-407 Gateway Business Park.
- Halton Hills offers competitive tax rates.
- Offers high quality build-to-suit developments in strategic locations at attractive prices.
- Highways 401 and 407 provide quick access to the Greater Toronto Area (GTA) and beyond.
- Close proximity to Toronto Pearson Airport.
- Halton Hills has a highly educated and diversified labour force.
- Area has attracted top Industrial and Office firms.

PROJECT PROFILE

HALTON HILLS CENTRE

Town of Halton Hills, Regional Municipality of Halton

Location:

West of Ninth Line on the south side of Steeles Ave.

Lot 1:

14920 Steeles Ave West.

Legal Description:

Part of the West Half of Lot 15, Concession 9
Designated as Part I

Plan Number:

20R16805

Acreage:

21.21 Acres

Lot 2:

15216 Steeles Ave East

Legal Description:

Part of the East Half of Lot 15, Concession 9
Designated as Part I

Plan Number:

20R16374

Acreage:

31.34 Acres

Zoning

Prestige Industrial
H (M-1)

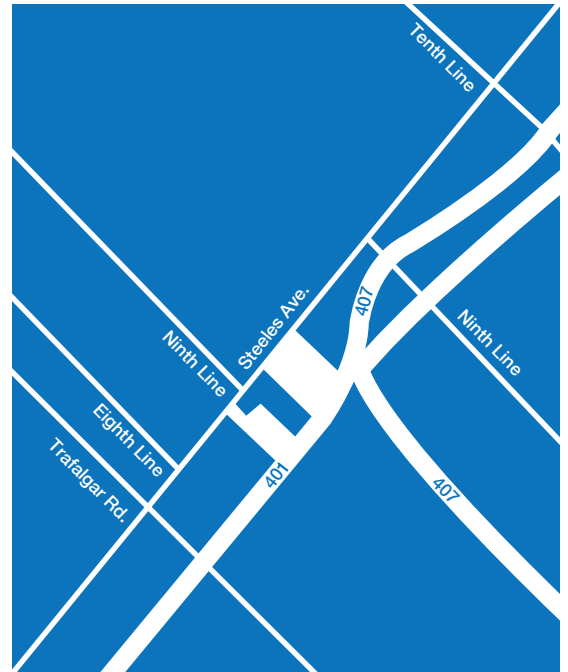
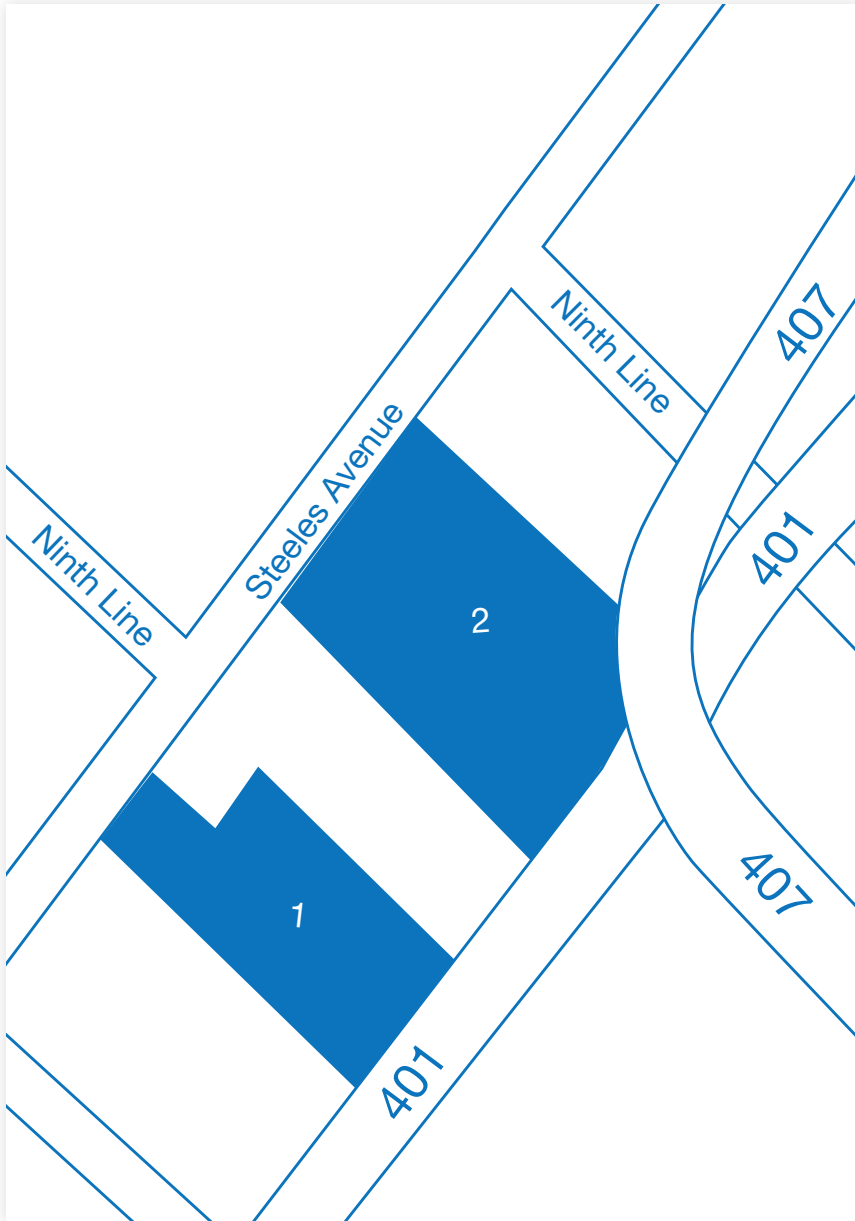
Site Attractions:

- Highway 401 exposure
- Toronto International Airport
- Highway 407 exposure

Contact: Metrus Properties

Tel: (905) 669-9714 Tor: (416) 798-7173 Fax: (905) 326-4182

HALTON HILLS CENTRE



HALTON HILLS CENTRE:

Lot	Acreage	Zoning
1	21.21	H (M-1)
2	31.34	H (M-1)