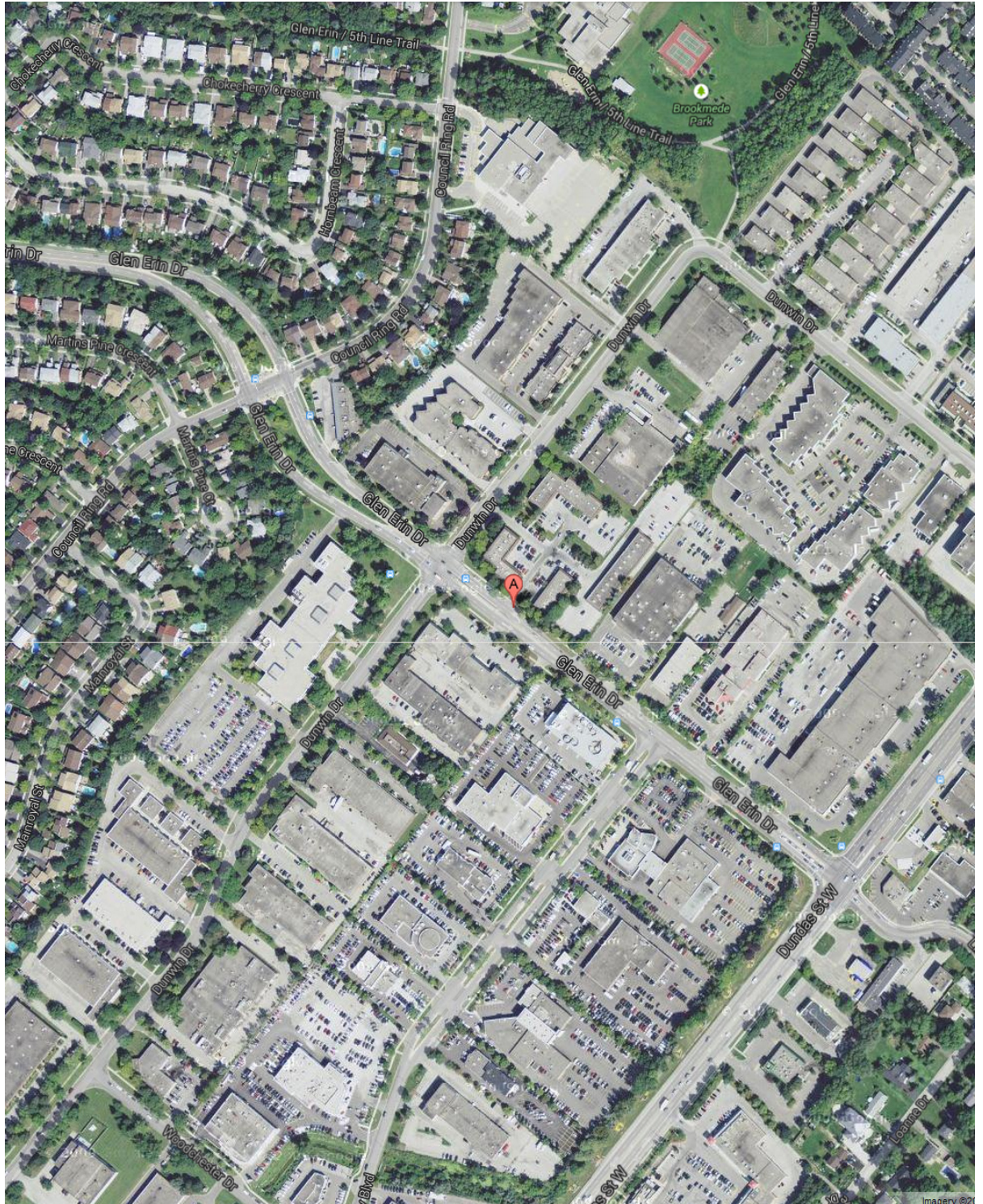


# Office - Aerial View



LOCATION:

**3095 Glen Erin Dr.**

**City of Mississauga**

South of Erin Mills Pkwy, North of Dundas St. West



FOR MORE INFORMATION, PLEASE CONTACT:

**Gabrielle Mair**

Vice President Leasing

**905.669.9714**

[gmair@metrusproperties.com](mailto:gmair@metrusproperties.com)