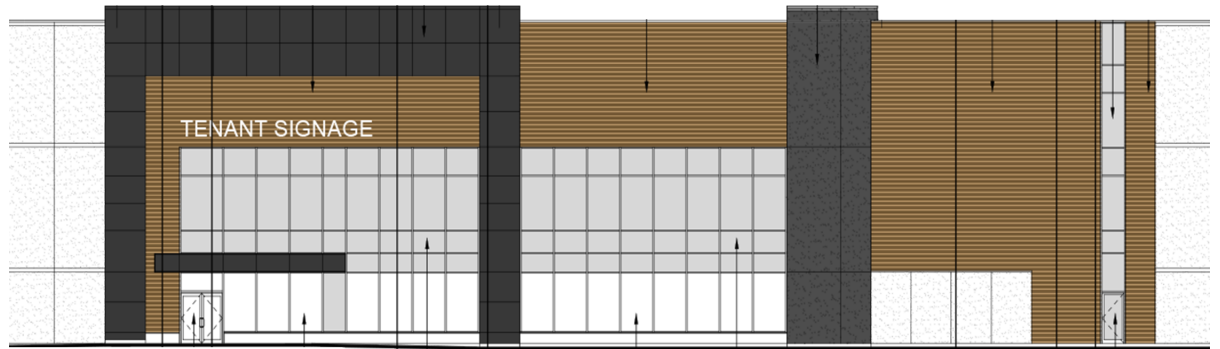


Industrial



LOCATION:

1350 Ringwell Drive

Town of East Gwillimbury

UNIT/SUITE: Entire Building

AVAILABLE SPACE: 238,000

NET RENT: TBD

OPERATING EXPENSE: TBD

REALTY TAXES: \$2.15/sf

LOADING: Truck level doors 34, Drive in - 2

CEILING HEIGHT: 40'

AMPS: 800

MISCELLANEOUS:

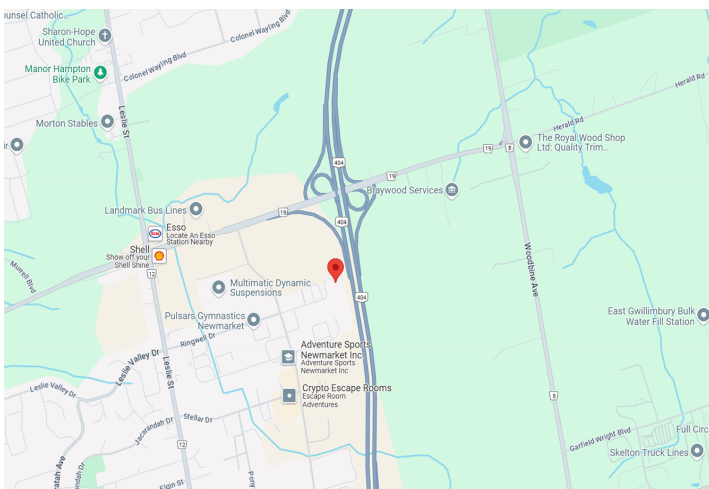
Office space 3% included.

New state of the art construction and design.

Available July 2026.

Unit 1A 126,000 sft

Unit 2A 112,000 sft



FOR MORE INFORMATION, PLEASE CONTACT:

Gabrielle Mair
905.669.9714

905.669.9714
Vice President Leasing