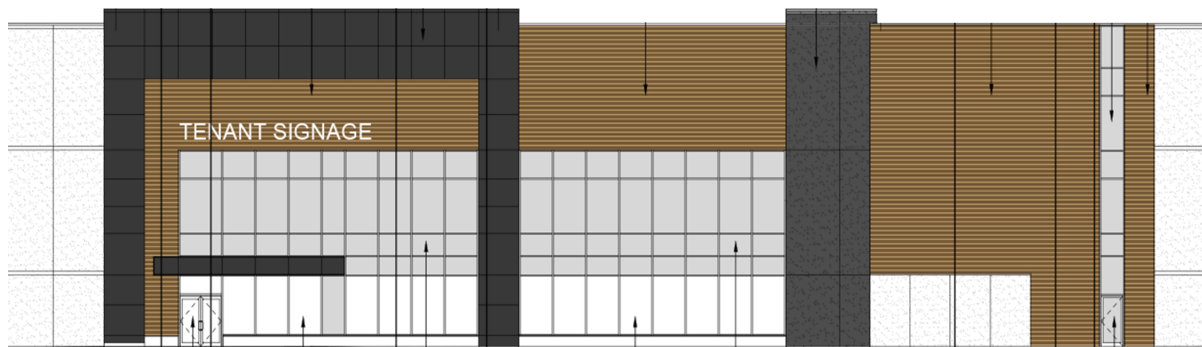


Industrial



LOCATION:

1350 Ringwell Drive

Town of East Gwillimbury

UNIT/SUITE: 1A

AVAILABLE SPACE: 125,799

NET RENT: TBD

OPERATING EXPENSE: TBD

REALTY TAXES: \$2.15/sf

LOADING: Truck level doors 22, Drive in 1

CEILING HEIGHT: 40'

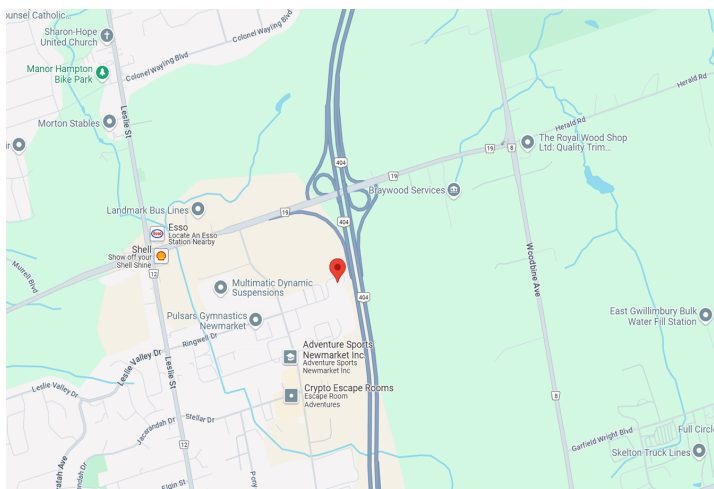
AMPS: 800

MISCELLANEOUS:

Office space 3% included.

New state of the art construction and design. Available July 2026.

Entire building 238,000 sft.



FOR MORE INFORMATION, PLEASE CONTACT:

Gabrielle Mair
905.669.9714

905.669.9714
Vice President Leasing