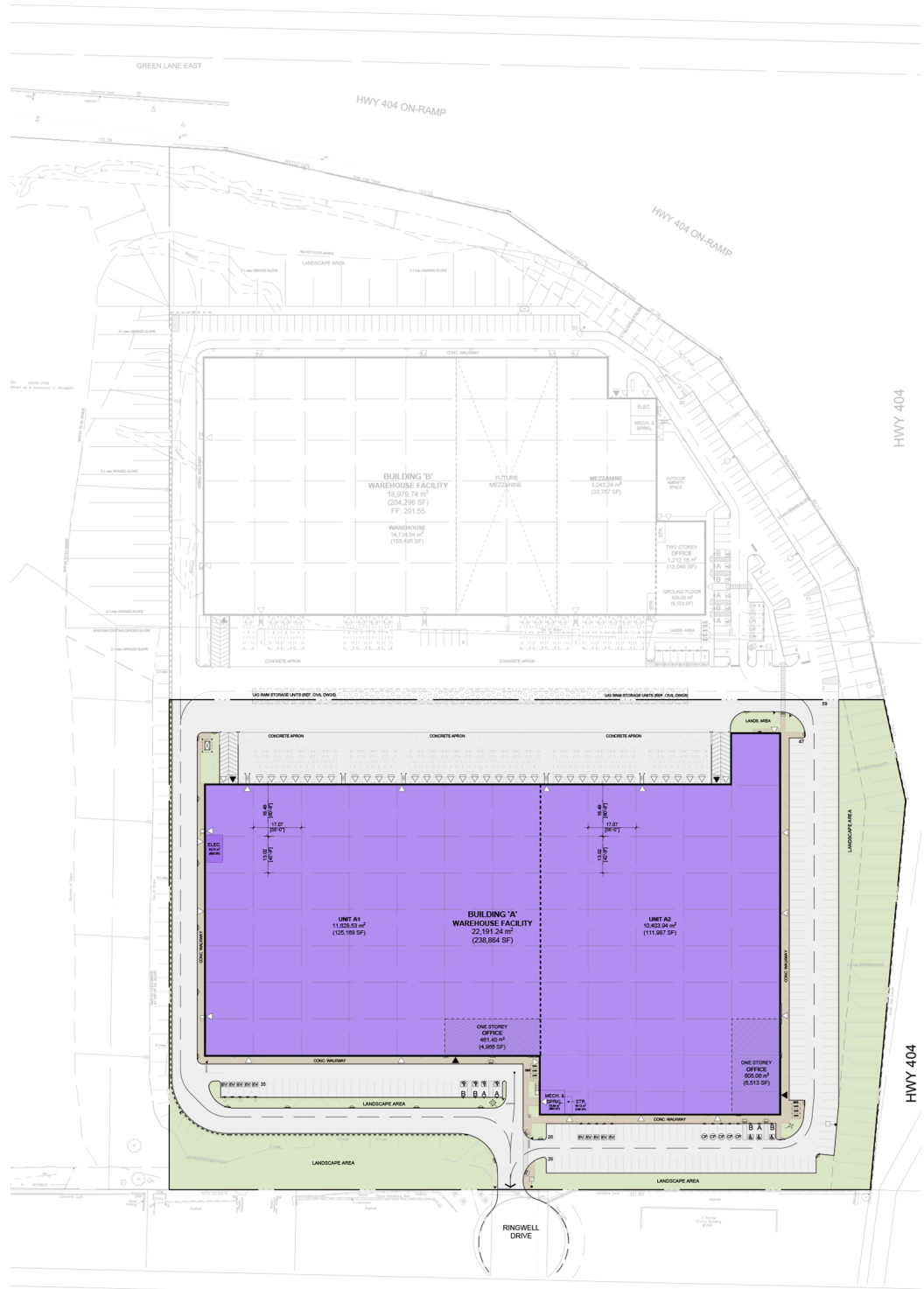


# Industrial - Site Plan



LOCATION:

**1350 Ringwell Drive**  
**Town of East Gwillimbury**



FOR MORE INFORMATION, PLEASE CONTACT:

**Gabrielle Mair**  
 905.669.9714

**905.669.9714**  
**Vice President Leasing**

The information combined herein has been obtained from source deemed reliable; however, we do not warrant its accuracy. The information herein may change from time to time without notice. The property may be withdrawn from the market without notice.