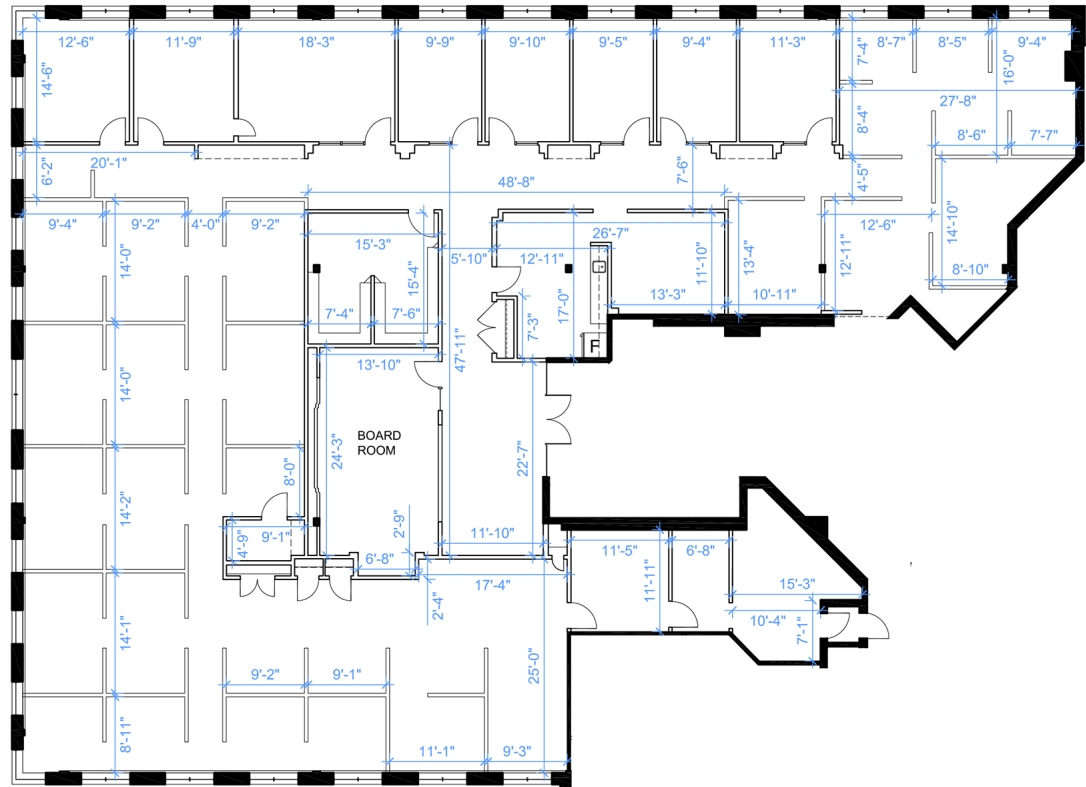
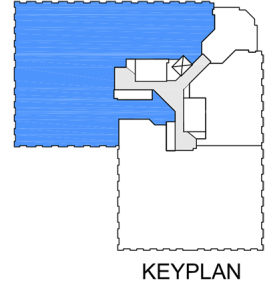


Office - Floor Plan



Note: Drawings dimensions are approximate and for illustrative purposes only. The Landlord and Space Database Inc. make no representation as to the accuracy and/or completeness of this information.

SUITE 2002-2003
RENTABLE AREA = 9,208 SF
 ABOVE INFORMATION ESTABLISHED ACCORDING
 TO BOMA / ANSI Z65.1 1996

LOCATION:

1700 Langstaff Road

City of Vaughan

Corner of Langstaff Road and Staffern Road



FOR MORE INFORMATION, PLEASE CONTACT:

Gabrielle Mair
 Vice President Leasing

905.669.9714
gmail@metrusproperties.com

The information combined herein has been obtained from source deemed reliable; however, we do not warrant its accuracy. The information herein may change from time to time without notice. The property may be withdrawn from the market without notice.