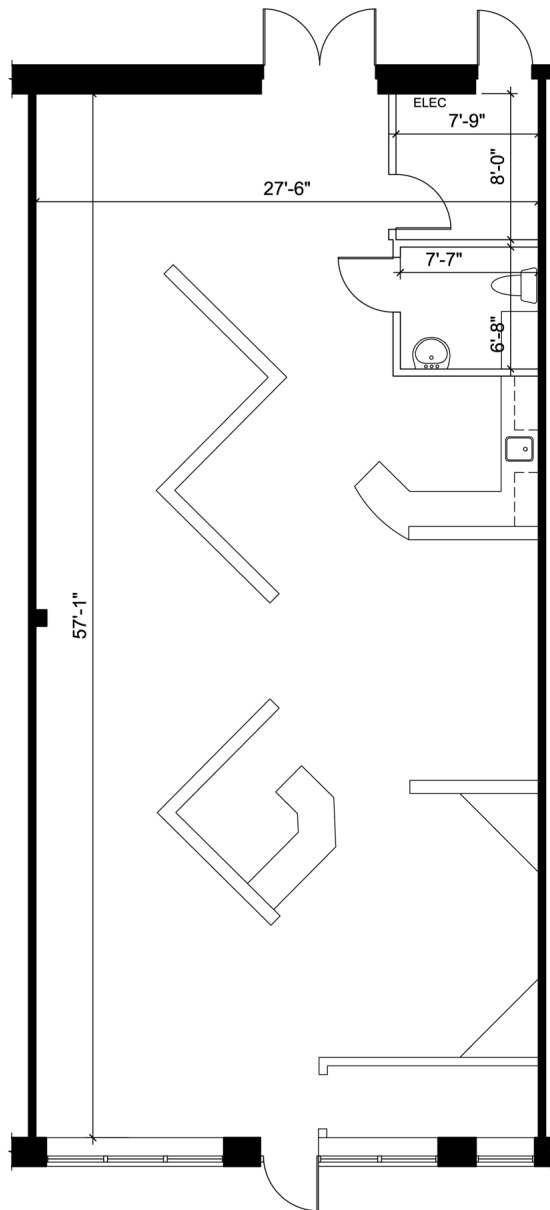


Retail - Floor Plan



UNIT 11A
RENTABLE AREA = 1,728 SF
RENTABLE AREA PROVIDED BY METRUS

LOCATION:

3145 Dundas St. W.

City of Mississauga

North-east corner of Dundas St. & Ridgeway Rd.



FOR MORE INFORMATION, PLEASE CONTACT:

Antoinette Grossi
Vice President Leasing

905.669.9714
agrossi@metrusproperties.com